

POLYESTER EX SERIE

Ex Enclosures made of glass reinforced polyester (GRP)

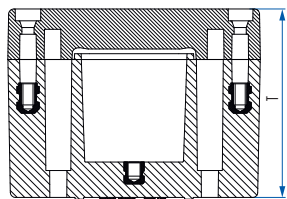
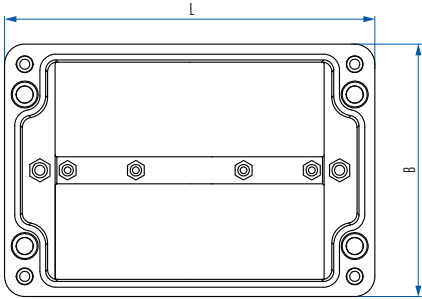


Technical Informations	Material	Glass reinforced polyester, Graphite added
	Color	Similar to RAL 9011 / black
	Protection Class	IP 66, EN 60529
	Surface resistance	< 10 ⁹ Ohm
	Mechanical Strength	Impact Energy 7 Jules, EN 60079-0
	Flammability	Self Extinguishing, UL 94 V0
	Service Temperature	Silicone -60 °C + 110 °C Viton -30 °C + 110 °C
	Compliance Standard	EN IEC 60079-0:2018 EN IEC 60079-7:2015/A1:2018 EN 60079-31:2014
	Process Control System	ISO 9001:2008, IEC 80079-34:2011

Polyester Ex Series

II 2 GD
Ex eb IIC Gb - Ex tb IIIC Db

Sira 18ATEx3261U Issue : 1



Model Number	Size mm			DIN rail		Mounting Plate	Ext. Mounting Bracket		
				TS 15	TS 35				
	B	x	L	x	T				
EX-GRJ01	80	X	75	X	55	✓	-	✓	✓
EX-GRJ04	80	X	75	X	75	✓	-	✓	✓
EX-GRJ02	110	X	75	X	55	✓	-	✓	✓
EX-GRJ08	110	X	75	X	75	✓	-	✓	✓
EX-GRJ03	122	X	120	X	90	-	✓	✓	✓
EX-GRJ05	160	X	75	X	55	✓	-	✓	✓
EX-GRJ06	160	X	75	X	75	✓	-	✓	✓
EX-GRJ07	160	X	160	X	90	-	✓	✓	✓
EX-GRJ09	190	X	75	X	55	✓	-	✓	✓
EX-GRJ10	190	X	75	X	75	✓	-	✓	✓
EX-GRJ11	220	X	120	X	090	-	✓	✓	✓
EX-GRJ12	255	X	250	X	120	-	✓	✓	✓
EX-GRJ17	255	X	250	X	160	-	✓	✓	✓
EX-GRJ13	260	X	160	X	90				
EX-GRJ14	360	X	160	X	90	-	✓	✓	✓
EX-GRJ15	400	X	250	X	120				
EX-GRJ18	400	X	250	X	160	-	✓	✓	✓
EX-GRJ16	400	X	405	X	120				
EX-GRJ19	406	X	401	X	201	-	✓	✓	✓
EX-GRJ20	605	X	250	X	120				
EX-GRJ21	600	X	250	X	160	-	✓	✓	✓